

CYD41 High Sensitive Hall effect Switch IC for high temperature

CYD41 Series high sensitive Hall Effect switch IC is composed of a reverse protector, voltage regulator, Hall voltage generator, differential amplifier, Schmitt trigger and an open-collector output on a single silicon chip. ICs can convert the changeable magnetic field signal into digital voltage output.



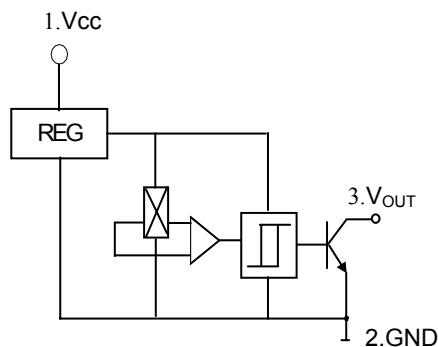
FEATURES

- ◆ High Sensitivity
- ◆ Resistant to Physical Stress
- ◆ Wide Supply Voltage Range
- ◆ Interfacing with All Kinds of Logic Circuits Directly

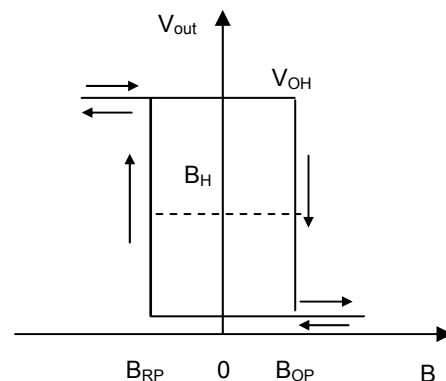
TYPICAL APPLICATION

- ◆ High Sensitive Non-contact Switch
- ◆ DC Brushless Motor
- ◆ DC Brushless Fan

FUNCTIONAL BLOCK DIAGRAM

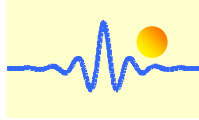


MAGNETIC-ELECTRICAL TRANSFER CHARACTERISTICS



ABSOLUTE MAXIMUM RATINGS

Parameter	Symbol	Value		Unit
		Min	Max	
Supply Voltage	Vcc	4.5V~24V		V
Magnetic Flux Density	B	unlimited	unlimited	mT
Output Current	Io	-	25	MA
Operating Temperature Range	T _A	-55	150	°C
Storage Temperature Range	T _S	-55	150	°C



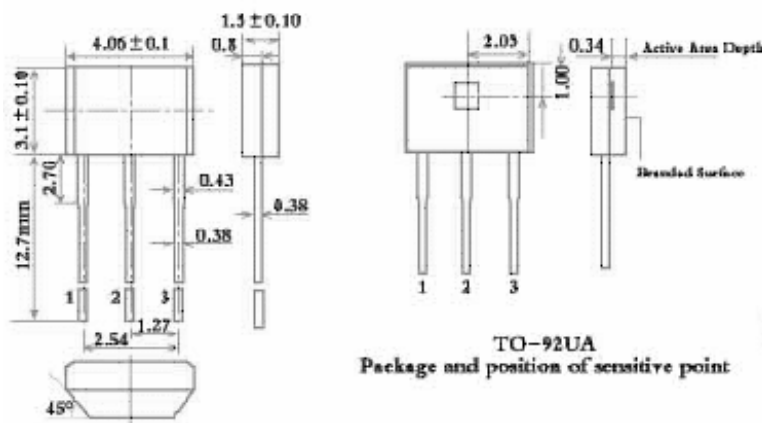
ELECTRICAL CHARACTERISTICS

Parameter	Test Condition	Symbol	Value			Unit
			Min	Typ	Max	
Supply Voltage	V _{CC} =4.5V~24V	V _{CC}	4.5	-	24.0	V
Output Low Voltage	V _{CC} =4.5V, R _L =960Ω B≥B _{OP}	V _{OL}	-	0.2	0.4	V
Output Leakage Current	V _O =V _{CCmax} , B≤B _{RP}	I _{OH}	-	1.0	10.0	μA
Supply Current	V _{CC} =V _{CCmax} open-collector output	I _{CC}	-	4.0	8.0	mA
Output Rise time	V _{CC} =12V, R _L =820Ω C _L =20pF	t _r	-	1.5	-	μS
Output Fall time		t _f	-	1.0	-	μS

Magnetic Characteristics (Unit: mT)

Parameter	Test condition	Value			Unit
		Min	Typ	Max	
Operate Point (B _{OP})	-20°C < TA < +90°C	1	4	7	mT
Release Point (B _{RP})	-20°C < TA < +90°C	-7	-4	-1	
Hysteresis (B _H)	-20°C < TA < +90°C	4	8	-	

Package Outline Drawing (Unit: mm)



PIN NOTES

1. Power Supply
2. Ground
3. Output

Cautions

1. It is possible that outside mechanical stress affects the operating point and the release point of Hall-effect circuit, therefore, mechanical stress should be lessened as far as possible in the process of assembly;
2. Pay attention to the soldering temperature at the leads, and keep it lower in a short time to guarantee good soldering quality.